

Steps that can be completed before you arrive in British Columbia (B.C.), Canada

You want to work as a registered landscape architect in B.C.

The British Columbia Society of Landscape Architects (BCSLA) will accept degrees from accredited institutions that have met the standards of the Landscape Architecture Accreditation Council (LAAC). Please visit LAAC's website at <http://www.csla-aapc.ca/resources/accredited-university-programs> to identify whether the program you have completed is accredited by the LAAC.

Obtain a post-secondary degree in landscape architecture from an accredited program that have met the standards of the Landscape Architecture Accreditation Council (LAAC). Please visit LAAC's website at <http://www.csla-aapc.ca/resources/accredited-university-programs> to find a list of accredited institutions also recognized by British Columbia Society of Landscape Architects (BCSLA).

You have a Bachelor's or Master's degree in landscape architecture from an accredited institution?

You are registered in good standing for 10 or more years in another jurisdiction recognized by British Columbia Society of Landscape Architects (BCSLA)?

You have 6 years of direct work experience in landscape architecture?

Apply for membership with the British Columbia Society of Landscape Architects (BCSLA) through Reciprocity. Download an application form from www.bcsla.org. You may also request an application form by contacting BCSLA. Complete the application form and send it with the following:

- Original or certified copy of academic transcript sent directly to BCSLA from an accredited university and a copy of your Bachelor's or Master's degree certificate
- Include a passport-size photograph and copy of your resume
- If you have been registered with a landscape architecture society anywhere in the world, request that organization to provide a certificate of standing from each jurisdiction in which you have been a member of
- Certificate of character references
- If English is not your first language you must submit passing scores from a test of English proficiency by an agency recognized by the BCSLA with your application for registration. When you apply for the test you should arrange to have your test scores sent directly to BCSLA. The test takes 2.5 hours to complete. (<http://www.lpitest.ca/>)
- Test fee ranges from \$109 to \$160 depending on the location of test
- Pay the non-refundable application fee of \$31.50

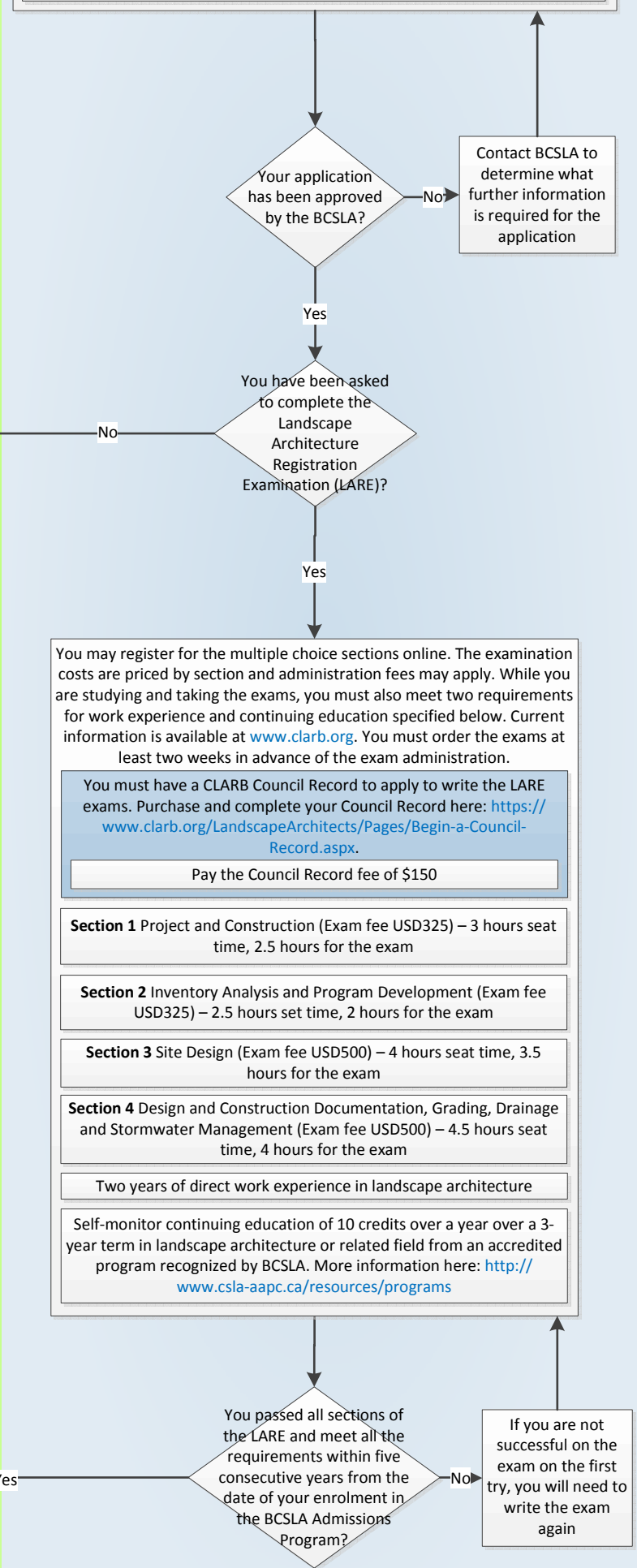
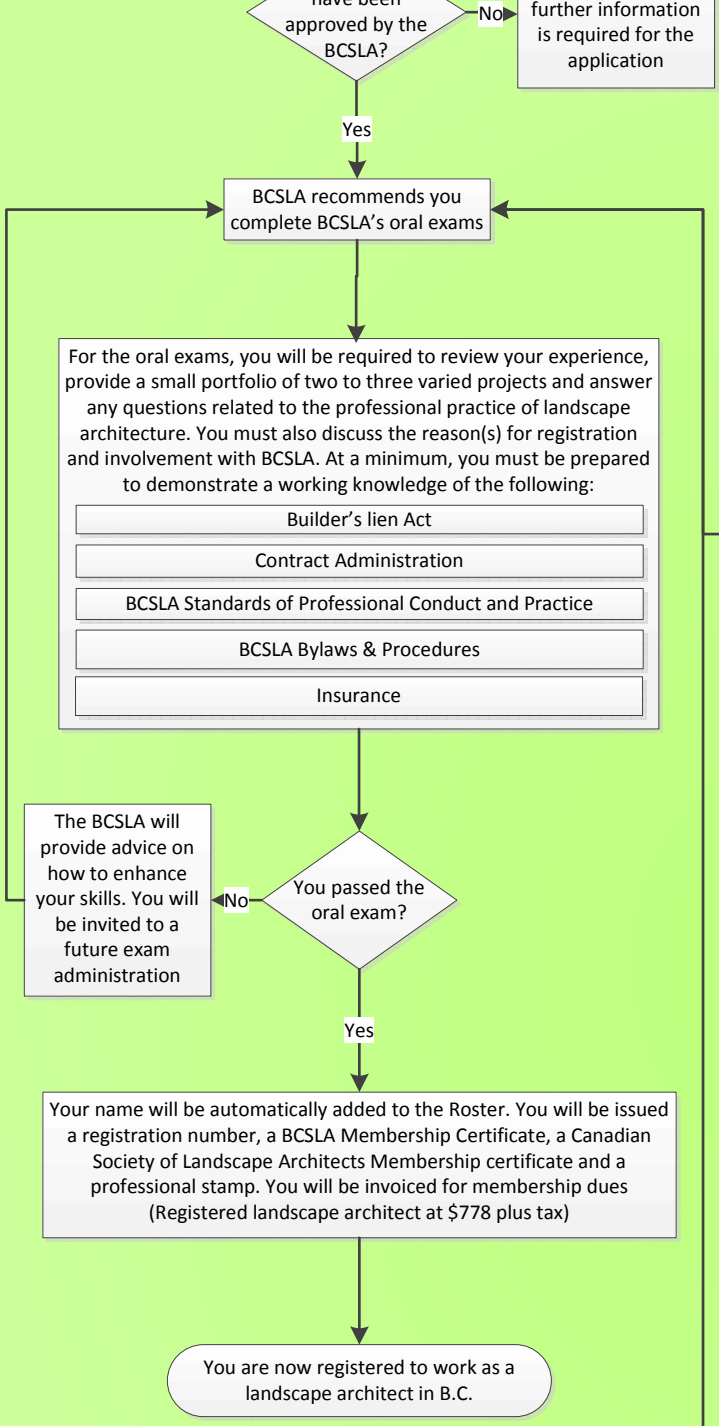
Apply for membership with the British Columbia Society of Landscape Architects (BCSLA) through Internship. Download an application form from www.bcsla.org. You may also request an application form by contacting BCSLA. Complete the application form and send it with the following:

- If you are from outside of North American, you must check with BCSLA and have your academic credentials assessed by BCIT International Credential Evaluation Service (ICES) (<http://www.bcit.ca/ices/>). You must request that ICES submit evaluation results directly to the BCSLA at the same time as your application. Assessment time varies with the type of evaluation ranging from 4 to 7 weeks.
- Pay evaluation fee of \$125 - \$225 plus tax depending on the type of evaluation report required
- Include a passport-size photograph and copy of your resume
- If you have been registered with a landscape architecture society anywhere in the world, request that organization to provide a certificate of standing from each jurisdiction in which you have been a member of
- If you have not been registered before, you will need to provide a reference declaring your experience, employment contract and job description. Reference should come from a Registered Landscape Architect Principal who satisfies the standards required by the Credentials Committee. (References can be from other countries. If the documents are not in English they must be translated. To find a certified translator go to <http://www.stibc.org/page/directory.aspx>)
- Certificate of character references
- If English is not your first language you must submit passing scores from a test of English proficiency by an agency recognized by the BCSLA with your application for registration. When you apply for the test you should arrange to have your test scores sent directly to BCSLA. The test takes 2.5 hours to complete (<http://www.lpitest.ca/>)
- Test fee ranges from \$109 to \$160 depending on the location of test
- Pay the non-refundable application fee of \$31.50

Steps that must be completed in British Columbia (B.C.) Canada

Your application have been approved by the BCSLA?

Contact BCSLA to determine what further information is required for the application



Note: This map describes the different paths to take to become an landscape architect in British Columbia (B.C.). It is intended to be read along with the Job Profile and Quiz Results. The path you will need to take depends on the type of training/education and work-related experience you currently have in this occupation. Please ensure that all the documents you submit are in English. The approximate time it will take to go through this path ranges from 4 months to 2 years and 2 months. This timeframe will vary depending on how quickly you complete the application form(s), write the exams, and take any required courses. The cost of qualification ranges from \$810 to \$2,995. The fees listed may include tax. None of the fees include the cost of post-secondary education. Visit the British Columbia Society of Landscape Architects' website for the most up to date information [http://www.bcsla.org/].